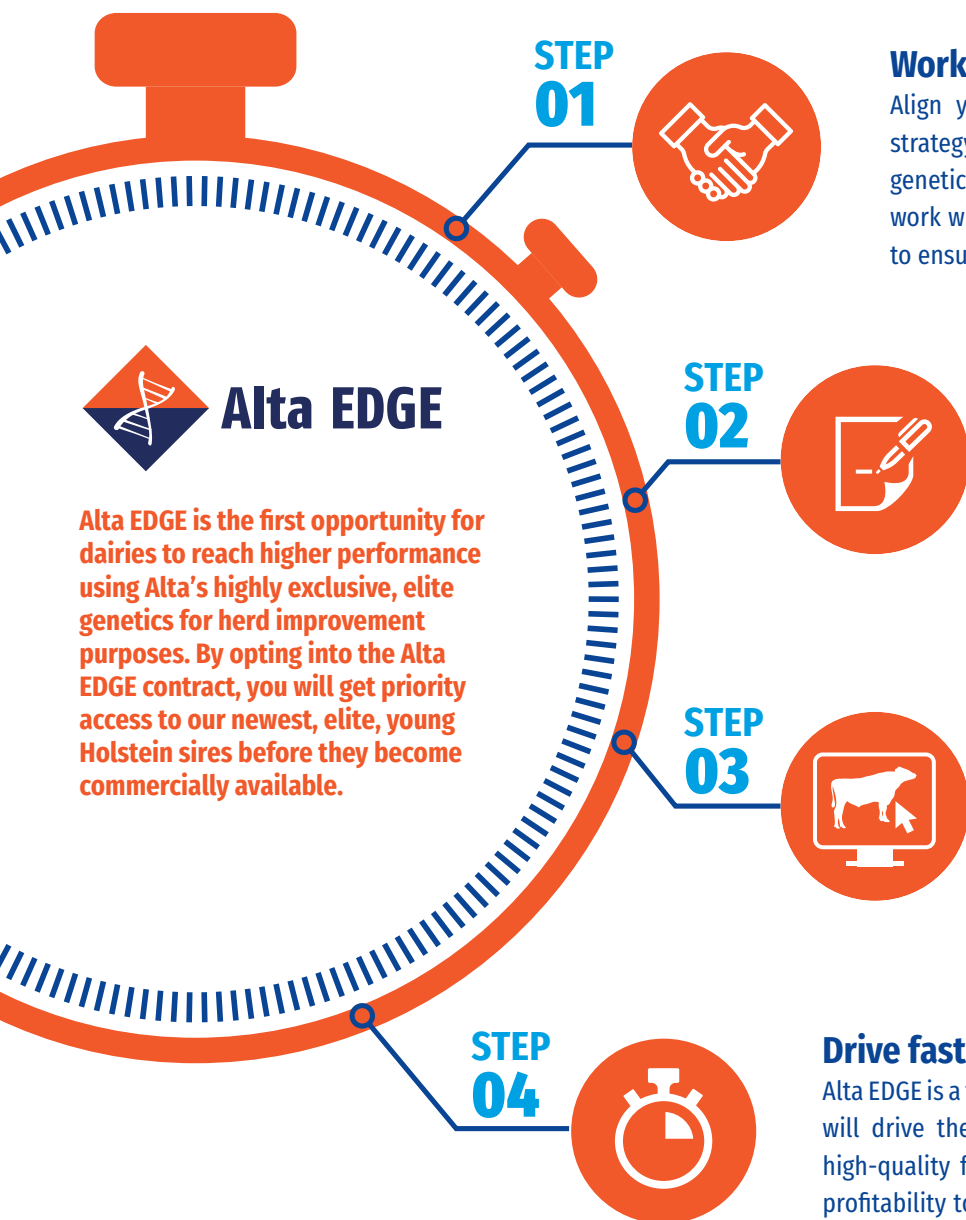


Get the Edge on Genetic Progress

Choose Alta EDGE!



ALTA EDGE SIRES - JUNE 2025

511	Code	Bull Name	Pedigree	GLPI	PRO\$	Milk	Pro	Fat	Conf	Mamm	F&L	SCS	MS	Temp	DF	HL	A2A2
♦	011HO17506	AltaVITALIZE	CATAPULT X AltaEXQUISITE	3881	3251	724	71	141	5	5	3	100	109	104	106	104	
♦	011HO17462	AltaCASANOVA	CATAPULT X AltaEXQUISITE	3807	3302	869	67	147	2	1	2	105	107	106	107	106	✓
♦	011HO17345	AltaPRESTIGE	UNDERTONE X AltaEXQUISITE	3653	3386	974	81	156	-3	-3	-1	105	101	108	99	105	
♦	011JE07753	ALTAWISCO {6}-P	AltaFOREFRONT {5} X DABO-P	1898	2218	1144	52	63	1	3	-6	105	101	100	103	107	✓
♦	011JE07732	AltaDUNBAR {5}	AltaDRAYCE {6} X HENDRIX {4}	1915	2333	1697	63	79	-1	1	-6	103	98	98	101	104	✓
♦	011JE07713	AltaFORTE {6}-P	AltaFOREFRONT {5} X KESTREL-P	1880	2198	1210	59	66	-1	-1	-5	101	98	102	106	104	✓
♦	011JE07712	AltaDRONE {5}	JX CHATHAM {4} X JX THRASHER {6}	2007	2652	1654	60	77	1	3	-6	104	100	102	104	108	✓
♦	011JE07698	AltaPINPOINT {5}	JX CHATHAM {4} X JALAPENO	2026	2560	1293	50	69	3	5	-4	107	104	101	103	112	✓
♦	011JE07595	AltaFARVA {6}	JX CIRCLE{5} X GOT MAID	1958	2575	1017	58	94	-3	-2	-7	106	103	101	104	107	✓

Source: Canadian Dairy Network April 2025

Alta EDGE FAQ's

WHAT BREEDS WILL BE OFFERED IN THE ALTA EDGE PROGRAM?

We offer elite Holstein and Jersey sires through the Alta EDGE program. Depending on current genetics, both breeds may not always be represented on the program.

WHY IS ALTA REQUIRING SPECIFIC CONTRACTS FOR THIS PROGRAM?

The Alta EDGE program provides key customers with priority access to bulls that Alta expects to be significant contributors and high impact sires for the breed. Normally the AI industry would designate these sires as “mating sires,” meaning that semen from these bulls would be reserved from the market and experience a long delay in terms of commercial availability. A contract agreement enables Alta to release semen to interested dairy producers much sooner and more widely with clear terms and conditions for all parties.

WHAT CAN I EXPECT FROM ENROLLMENT IN THE ALTA EDGE PROGRAM?

Alta commits to grant Alta EDGE program clients with the highest priority in semen allocation from these elite level sires. Alta cannot assure the timeliness of fulfilling any orders placed through this program as product inventory and availability cannot be guaranteed.

Furthermore, Alta outlines its commitment should the company choose to exercise the option to purchase any progeny in accordance with the terms and conditions as defined in the Alta EDGE program agreement.

WHICH SIRES ARE DESIGNATED TO ALTA EDGE? WHERE CAN I FIND THIS INFORMATION?

Alta will regularly designate sires to the Alta EDGE program. These sires will be marketed exclusively in North America under the terms and conditions of the contract with the customers in the program. When new sires are added to the Alta EDGE program, that information will be updated on the program website and shared with Alta EDGE contractors via email.

WHAT RESTRICTIONS WILL BE SET UPON THE OFFSPRING?

Details of all restrictions agreed upon regarding all Alta EDGE offspring are specifically outlined in the Alta EDGE agreement. If you are in doubt, please contact our program administrator with any questions by emailing AltaEdge@altagenetics.com.

AM I ALLOWED TO SELL OFFSPRING OR EMBRYOS PRODUCED FROM AN ALTA EDGE SIRE?

Details of all restrictions agreed upon regarding all Alta EDGE offspring are specifically outlined in the Alta EDGE agreement. If you are in doubt, please contact our program administrator with any questions by emailing AltaEdge@altagenetics.com.

IF I AM ENROLLED IN THE ALTA EDGE PROGRAM, AM I GUARANTEED TO GET SEMEN ON THE ALTA EDGE SIRES THAT I WANT?

Semen on bulls designated as Alta EDGE sires can only be purchased if you/your dairy has a signed agreement in good standing with Alta. A signed agreement does not guarantee availability of Alta EDGE sires, since we cannot guarantee production levels. However, your signed Alta EDGE agreement grants you the highest priority to receive the semen that is available, and you will be notified of any production issues that prevent an order from being fulfilled.

HOW LONG IS THE DURATION OF THE ALTA EDGE PROGRAM AGREEMENT?

The Alta EDGE agreement is renewed annually. However, any resulting offspring or embryos from Alta EDGE sires are subject to the terms outlined in the agreement in place when the semen was purchased.

HOW MUCH WILL I PAY PER UNIT OF SEMEN?

The price of all Alta EDGE sires will depend on the availability and demand for their genetics. Please speak with your Alta advisor, or email AltaEdge@altagenetics.com regarding pricing information.

HOW DO I ENROLL?

You can enroll by submitting a request for an agreement to AltaEdge@altagenetics.com.

HOW WILL I GET THE SEMEN?

You will be notified by a client service representative when your order will be filled. All semen must be shipped directly from an Alta Genetics warehouse to the dairy that has signed the agreement and placed the order. A delivery notice from the third-party delivery service will constitute validation that the semen purchased was actually delivered to you.